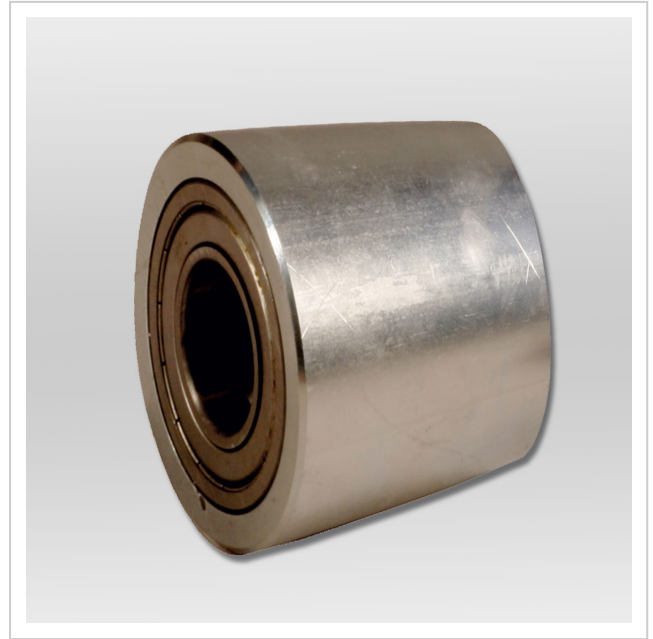


## Castor steel series S

High-quality steel castors of the S series. Suitable for use on uneven floors with roughness.

**Product number** 95 050 305-S

**Weight** 1.4kg



### Product description

Advantages of the steel castor design

- The steel body is made of a seamless steel tube. Two precision ball bearings are pressed into the steel core.
- For insensitive floors.

### Product properties

**Load capacity (kg)** 1 000

**Weight (kg)** 1,4

**Outside diameter (mm)** 90

**Fitting length (mm)** 60

**Inside diameter (mm)** 25

More images

