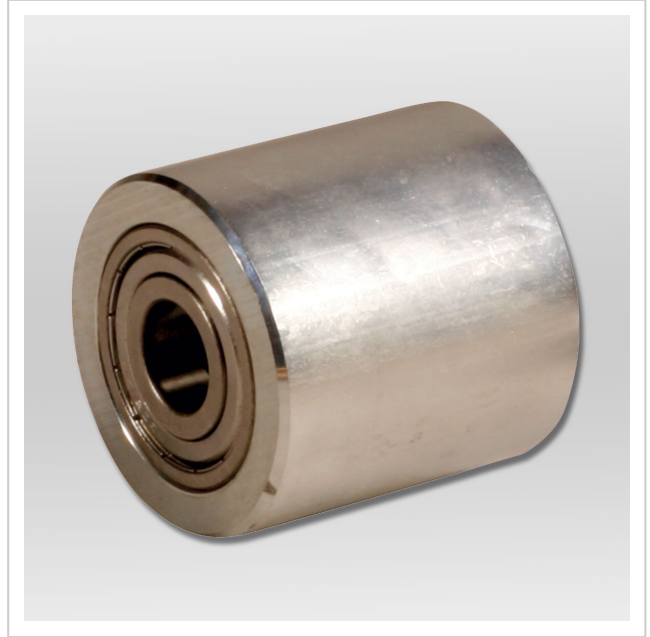


Castor steel series K

Product number 95 050 043-S

Weight 2.45kg



Product description

Advantages of the steel castor design

- The steel body is made of a seamless steel tube. Two precision ball bearings are pressed into the steel core.
- For insensitive floors

Product properties

Inside diameter (mm) 25
Outside diameter (mm) 85
Fitting length (mm) 85
Weight (kg) 2,45
Load capacity (kg) 750

More images

