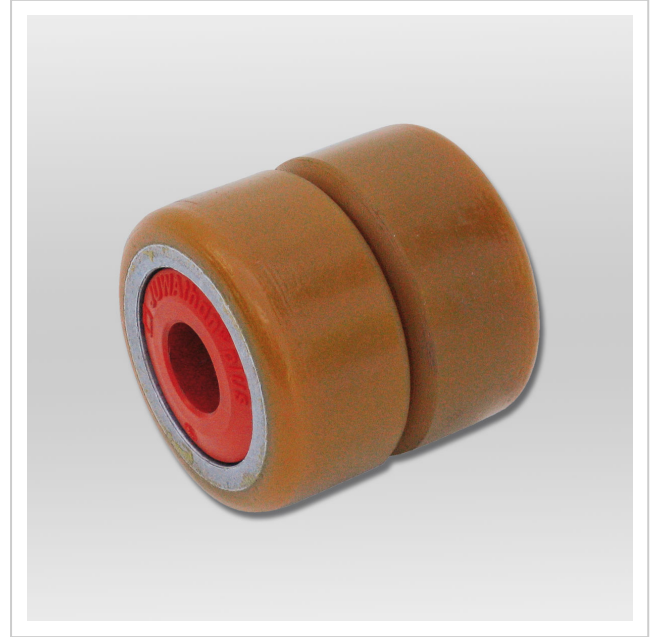


# Castor JUWathan® plus series K professional

**Product number** 95 050 089-D

**Weight** 1.05kg



## Product description

Advantages of the JUWathan® castor design

- The coating is molded around a steel core. Two precision ball bearings are pressed into the steel core.
- JUWathan® plus castor design: Based on the JUWathan® castor, the JUWathan®-plus castor has an improved coating material and a more advanced construction. An aluminum core replaces the steel core for easier handling at the same strength. A polyurethane based coating material is bonded around the aluminum core. This construction reduces the rolling resistance and weight by nearly 30 percent.
- We grant 5 years of warranty on operability of our wheels except improper use or normal abrasion.

## Product properties

<b>Inside diameter (mm)</b>	25
<b>Outside diameter (mm)</b>	85
<b>Fitting length (mm)</b>	85
<b>Load capacity (kg)</b>	875
<b>Weight (kg)</b>	1,05

## More images

