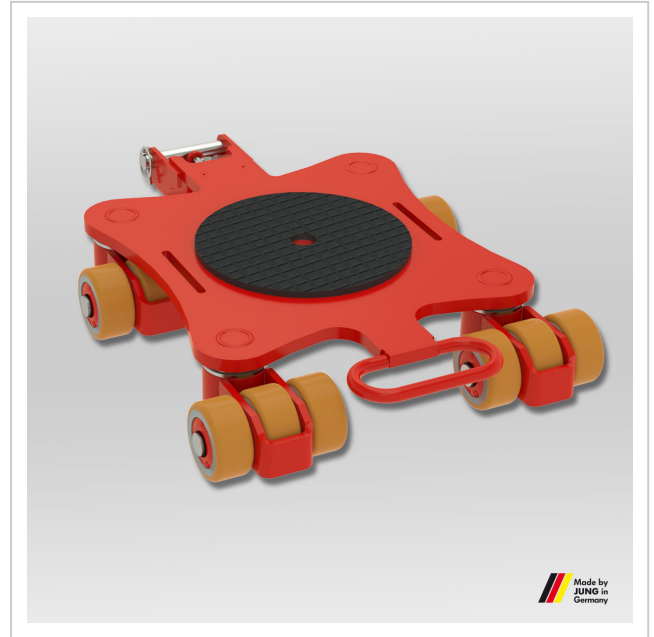


Revolving transport trolley JKB 4 K

Agile and powerful revolving transport trolley from JUNG. The JKB 4 K transport trolley transports loads up to 4 t with an installation height of 110 mm.

Product number 14 041 085-Vu

Weight 76kg



Product description

Advantages of the revolving transport trolley JKB 4 K

- Optional connecting bars can be fixed without tools by clamping down on adapter.
- Despite its low weight, the wheel assembly can transport heavy loads.
- Bearing supported swiveling castors allow 360° maneuverability.
- Mix and match revolving trolleys with transport trolleys: With an installation height of only 110 mm*, the rotating transport trolley JKB 4 is compatible with all steering and transport undercarriages of the K series.
- All products are also available in a set of two with price advantage.
- Unrivalled: The double roller system reduces rolling and turning resistance to a minimum.
- Using the slots in the platform, the trolleys JKB 4 - 8 can be affixed to the load with standard tiedown belts.
- In addition, all the rotational trolleys have a platform center hole to allow attachment to the load.
- Drawbars and connecting rods are available as accessories in various lengths.
- Inspected according to technical regulation ANSI ? ASME (USA)

It is recommended to select a payload of approximately 2/3 of the maximum load capacity to achieve the best compromise between payload, ergonomics, and handling of the equipment.

*) Due to technical changes, there may be tolerances of up to + 4.5 mm in the installation height since 2014.

Product properties

Cassette dimensions (mm)	690 x 475
Supporting surface per cassette (mm)	250
Castor dimensions (Ø x l mm)	85 x 43
Weight JUWathan® (kg)	38
Load capacity (suitable)	0 - 5 t
Consist of	1 x JKB 4 K
Number of castors (Pieces)	12
Height (mm)	110
Load capacity (t)	4

More images

