

## JH 20 G plus - Hydraulic jack

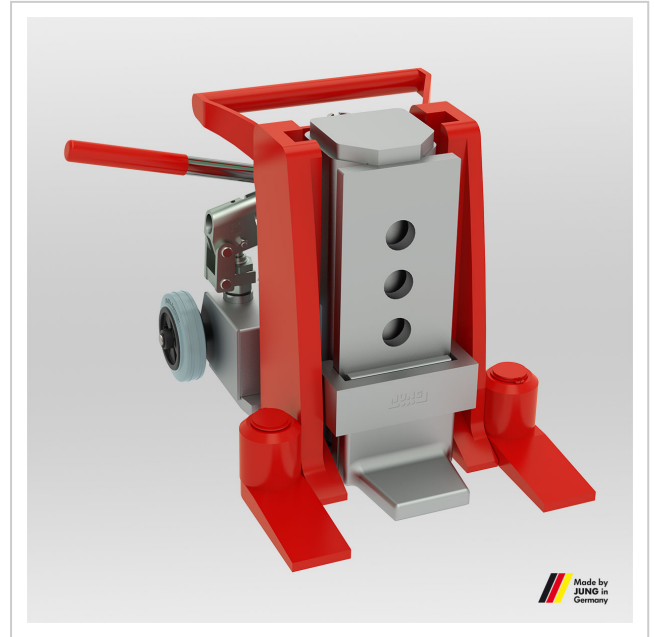
High-quality machine lifter from JUNG. The hydraulic lifting device JH 20 G plus lifts a load of 20 t and reaches a maximum lifting height of 190 mm.

**Product number** 01 200 102-G

**Weight** 60kg

**Width** 322mm

**Height** 340mm



### Product description

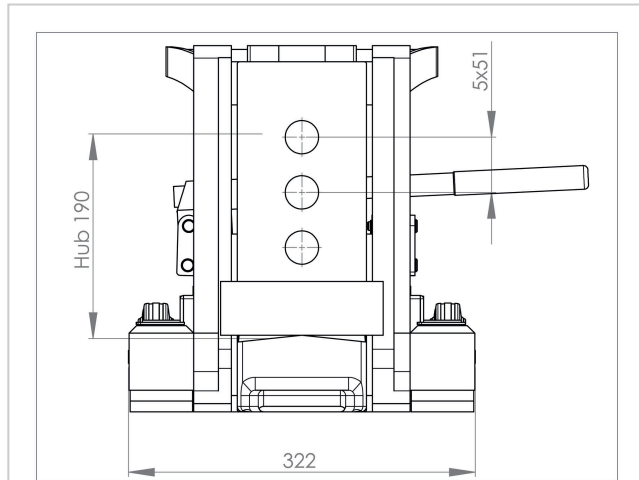
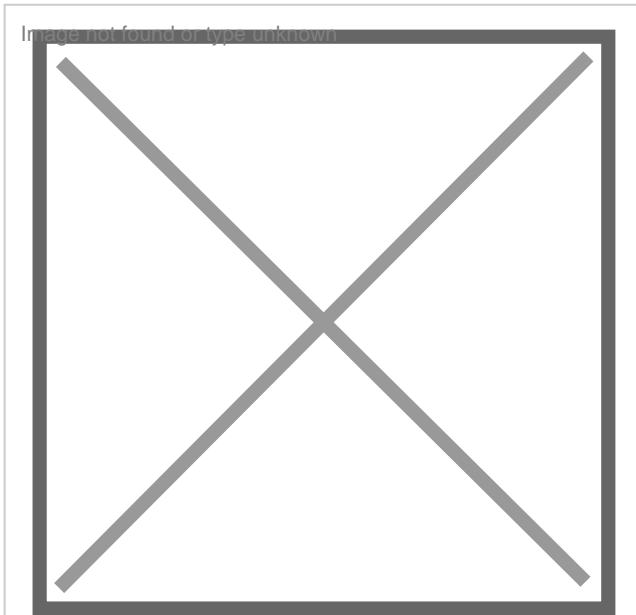
Qualities of the hydraulic jack JH 20 G plus

- Slide shoe design inside the guiding track prevents twisting of the piston inside the lifting cylinder. This guarantees better force distribution, less friction and reduced wear compared to conventional jacks.
- Reduced maintenance costs due to easy change slide shoes and removable pump unit.
- Extremely lightweight with high performance due to the use of highquality material and innovative design.
- Continuous adjustment to the load due to swiveling safety toe. Secure stability in every situation even in lifted position.
- The hydraulic jack JH 20 G plus is serially outfitted with a fast stroke and also available with a spring return.
- Die-forged steel toe provides impact resistance.

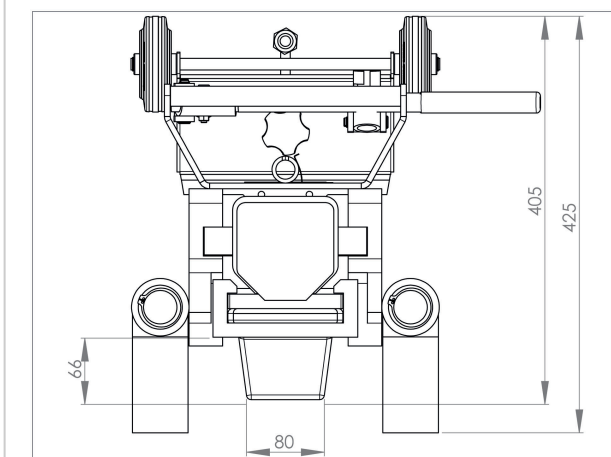
## Product properties

<b>Toe depth (mm)</b>	64
<b>Load capacity on top plate (t)</b>	20
<b>Toe width front (mm)</b>	80
<b>Length feet on side (mm)</b>	405
<b>Minimum lift toe height (mm)</b>	20
<b>Stroke (mm)</b>	190
<b>Maximum lift toe height (mm)</b>	225
<b>Lift toe adjustment</b>	5 x 51
<b>Top plate height (mm)</b>	340
<b>Height (mm)</b>	340
<b>Cylinder volume (l)</b>	0,73
<b>Pump unit included</b>	Ja
<b>Width (mm)</b>	322
<b>Length feet in front (mm)</b>	425

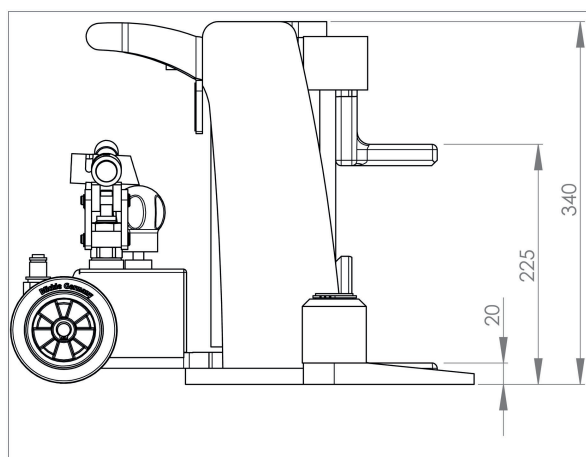
More images



JH 20 G plus | Art.No. 01 200 102-G | Frontansicht | Front view



JH 20 G plus | Art.No. 01 200 102-G | Draufsicht | Top view



JH 20 G plus | Art.No. 01 200 102-G | Seitenansicht | Side view



