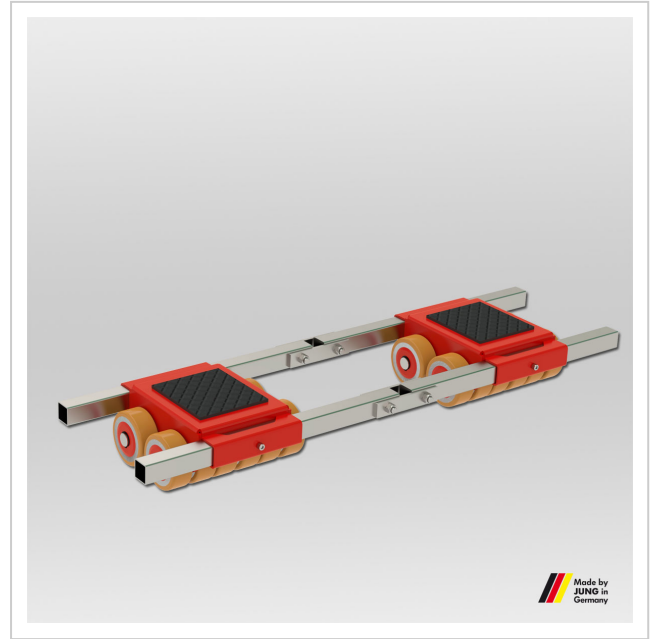


# Adjustable trolley JFB 30 G

High-performance transport trolley from JUNG. The JFB 30 G transport unit transports loads up to 30 t with an installation height of 180 mm.

**Product number** 10 303 140-V

**Weight** 98kg



## Product description

Advantages of the transport trolley JFB 30 G

- The pivoting cassettes and axles within the frame assure even pressure distribution across all castors and across the floor. No need for complex and expensive hydraulic compensation system.
- The double castor design results in dramatically easier steering and also causes the trolleys on the rear axis to follow in a truer course.
- All transport trolleys are ready for use.
- The adjustable-width transport trolley consists of two transport units and connecting bar.

## Product properties

|   |            |
|---|------------|
| <b>Cassettes adjustable from - to (mm)</b>  | 530 - 1300 |
| <b>Cassette dimensions (mm)</b>             | 460 x 400  |
| <b>Connecting bar with joint (mm)</b>       | 2 x 1 540  |
| <b>Load capacity (t)</b>                    | 30         |
| <b>Castor dimensions (Ø x l mm)</b>         | 140 x 59   |
| <b>Weight JUWATHAN®plus (kg)</b>            | 113        |
| <b>Supporting surface per cassette (mm)</b> | 220 x 200  |
| <b>Height (mm)</b>                          | 180        |
| <b>Load capacity (suitable)</b>             | 41 - 80 t  |

### More images

