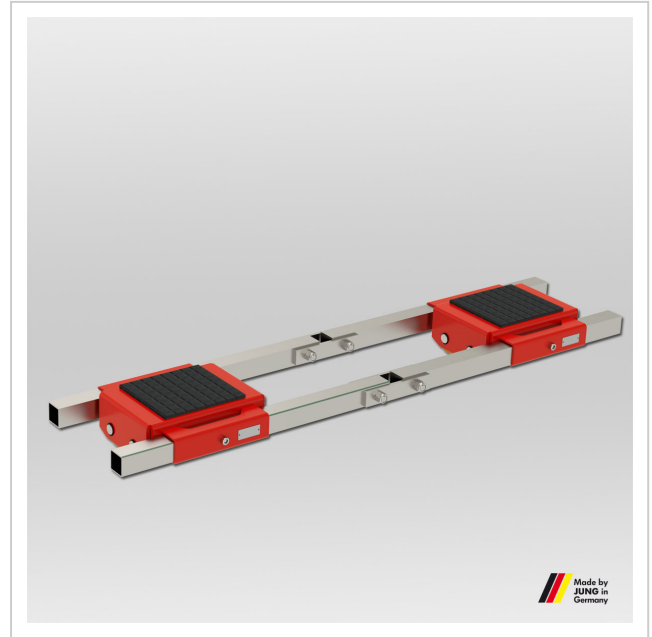


Adjustable trolley JFB 16 S

High-performance transport trolley from JUNG. The JFB 16 S trolley transports loads up to 16 t with an installation height of 125 mm.

Product number 06 161 090-V

Weight 74kg



Product description

Advantages of the transport trolley JFB 16 S

- Pivoting cassettes and axles within the frame (except for JLB 16 S) assure even pressure distribution across all castors and across the floor.
- Slim castor design (60 mm fitting length) results in easier steering due to reduced friction forces also in curves.
- Very low height at only 125 mm, with high capacity and less own weight.
- All transport trolleys are ready for use: The adjustable-width transport trolley consists of two transport units and connecting bars.
- Inspected according to technical regulation ANSI ? ASME (USA)
- The transport trolleys have a installation height of only 125 mm, allowing them to fit under almost any load. The drawbar with tow eye makes maneuvering and positioning easier. JUNG uses ball-bearing rollers for its transport trolleys, which ensure smooth and quiet operation. The rollers are equipped with a wear-resistant JUWATHAN coating as standard.

Product properties

Cassette dimensions (mm)	370 x 330
Cassettes adjustable from - to (mm)	540 - 1 300
Supporting surface per cassette (mm)	200 x 220
Castor dimensions (Ø x l mm)	90 x 60
Connecting bar with joint (mm)	2 x 1 540
Height (mm)	125
Load capacity (t)	16
Load capacity (suitable)	31 - 40 t

More images

