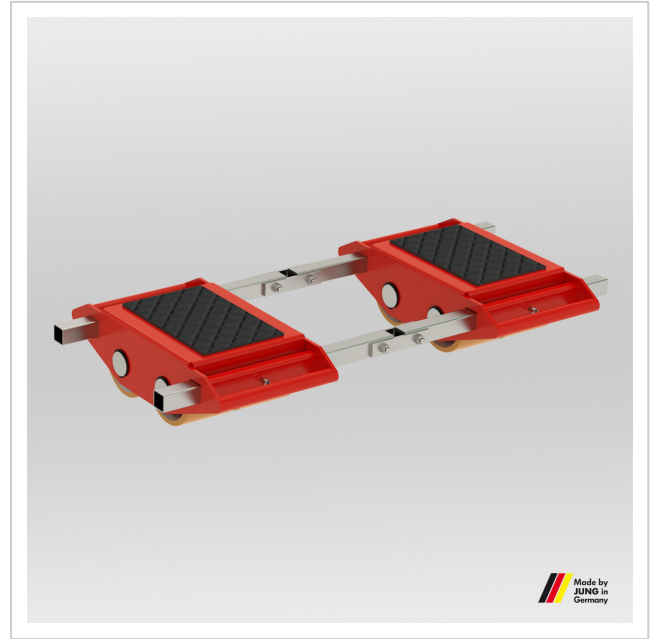


Adjustable trolley JFB 40 H Professional

Power and stability - the JLB 40 H transport trolley from JUNG can lift loads of up to 40 t with an installation height of 230 mm.

Product number 10 400 206-H

Weight 289kg



Product description

Advantages of the transport trolleys JLB 40 H

- Unrivalled: Small and lightweight trolleys at super high capacity.
- Steerable transport trolleys with pivoting cassettes for a better load distribution at all castors and the floor.
- All transport trolleys are ready for use: the steerable transport trolley is fitted with a ball bearing supported turntable and a handlebar. The adjustable-width transport trolley consists of two transport units and connecting bar.
- Also available as Professional version with JUWathan twin castors: the double castor design results in dramatically easier steering due to reduced friction forces in curves. The much lower friction resistance also causes the castors on the rear axis to follow in a truer course.

Product properties

Cassette dimensions (mm)	740 x 395
Cassettes adjustable from - to (mm)	585 - 1 500
Weight JUWathan® (kg)	310
Height (mm)	230
Supporting surface per cassette (mm)	400 x 260
Connecting bar with joint (mm)	2 x 1 540
Castor dimensions (Ø x l mm)	200 x 85
Number of castors (Pieces)	2 x 8
Load capacity (t)	40
Load capacity (suitable)	41 - 80 t

More images

