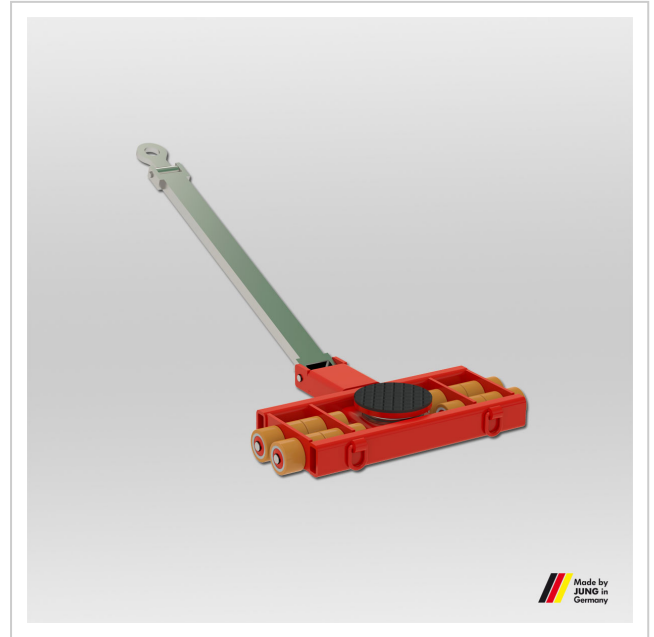


# Steerable trolley JLB 16 S

High-performance transport trolley from JUNG. The JLB 16 S steerable trolley transports loads up to 16 t with an installation height of only 125 mm.

**Product number** 05 161 090-V

**Weight** 82kg



## Product description

Advantages of the transport trolley JLB 16 S

- Slim castor design (60 mm fitting length) results in easier steering due to reduced friction forces also in curves.
- Very low height at only 125 mm, with high capacity and less own weight.
- All transport trolleys are ready for use: the steerable transport trolley is fitted with a ball bearing supported turntable and a handlebar.
- Inspected according to technical regulation ANSI ? ASME (USA)

## Product properties

<b>Dimensions steerable (mm)</b>	580 x 815
<b>Weight JUWATHAN® (kg)</b>	74
<b>Handlebar with pulling eye (mm)</b>	1 210
<b>Supporting surface of turntable Ø (mm)</b>	215
<b>Castor dimensions (Ø x l mm)</b>	90 x 60
<b>Height (mm)</b>	125
<b>Load capacity (t)</b>	16
<b>Number of castors (Pieces)</b>	2 x 8
<b>Load capacity (suitable)</b>	31 - 40 t

More images

