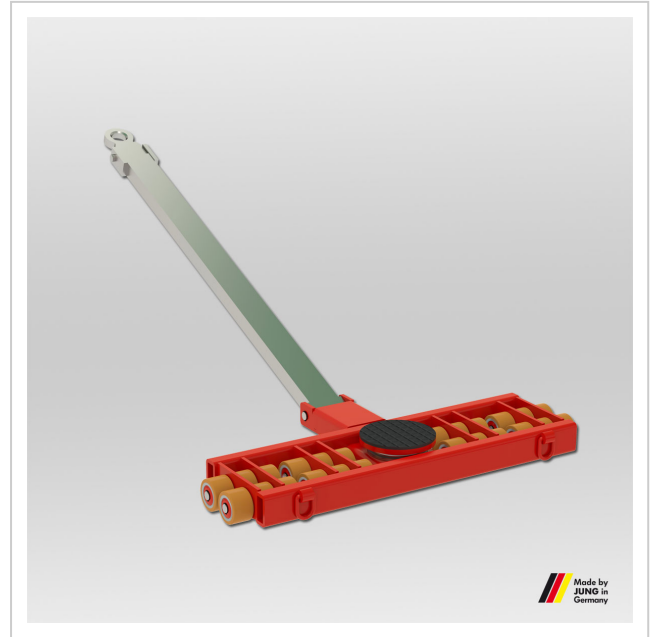


Steerable trolley JLB 24 S

High-performance transport trolley from JUNG. The JLB 24 S steerable trolley transports loads up to 24 t with an installation height of only 125 mm.

Product number 05 242 090-V

Weight 120kg



Product description

Advantages of the transport trolley JLB 24 S

- Pivoting cassettes and axles within the frame (except for JLB 16 S) assure even pressure distribution across all castors and across the floor.
- Slim castor design (60 mm fitting length) results in easier steering due to reduced friction forces also in curves.
- Very low height at only 125 mm, with high capacity and less own weight.
- All transport trolleys are ready for use: the steerable transport trolley is fitted with a ball bearing supported turntable and a handlebar (as shown in picture). The adjustable-width transport trolley consists of two transport units and connecting bars.
- The transport trolleys have an installation height of only 125 mm, allowing them to fit under almost any load. The drawbar with a tow eye makes maneuvering and positioning easier. JUNG uses ball-bearing rollers for its transport trolleys, ensuring smooth and quiet operation. The rollers come equipped with a wear-resistant JUWathan coating as standard.

Product properties

Weight JUWathan® (kg)	124
Supporting surface of turntable Ø (mm)	215
Number of castors (Pieces)	24
Castor dimensions (Ø x l mm)	90 x 60
Dimensions steerable (mm)	580 x 1 156
Height (mm)	125
Handlebar with pulling eye (mm)	1 480
Load capacity (suitable)	41 - 80 t
Load capacity (t)	24

More images

