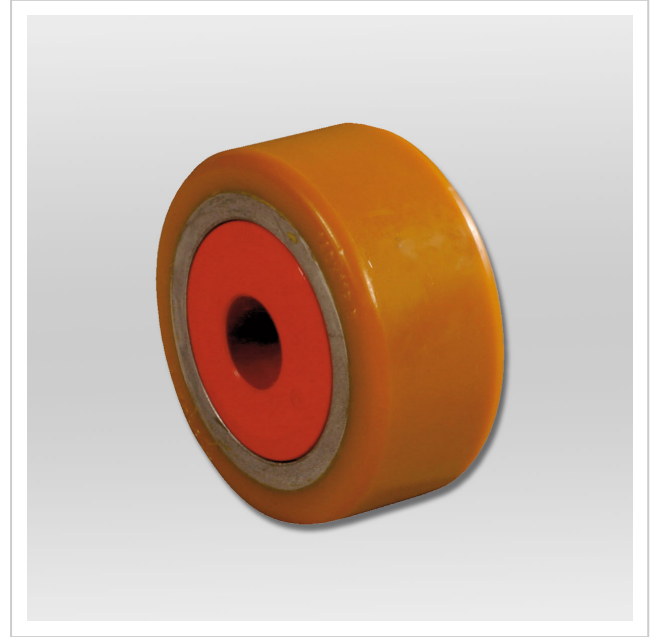


Castor JUWathan® plus series G

Product number 95 050 147-V

Weight 1.85kg



Product description

Advantages of the JUWathan® castor design

- The coating is molded around a steel core. Two precision ball bearings are pressed into the steel core.
- JUWathan® plus castor design: Based on the JUWathan® castor, the JUWathan®-plus castor has an improved coating material and a more advanced construction. An aluminum core replaces the steel core for easier handling at the same strength. A polyurethane based coating material is bonded around the aluminum core. This construction reduces the rolling resistance and weight by nearly 30 percent.
- We grant 5 years of warranty on operability of our wheels except improper use or normal abrasion.

Product properties

Weight (kg)	1,85
Load capacity (kg)	1 250
Outside diameter (mm)	140
Fitting length (mm)	59
Inside diameter (mm)	35

More images

